

LEAD-IN-WATER RETEST REPORT

August 30th, 2023

Sheridan High School & Faulconer-Chapman School

EIS Job No. 2023061

Prepared For:

**Sheridan School District
C/O Sean Vesper, Operations & Facilities Manager
435 South Bridge St.
Sheridan, OR 97378
Phone: (971) 261-6965
E-mail: sean.vesper@sheridan.k12.or.us**

Prepared By:

**Environmental Inspection Services Pro, LLC
Matthew C. Spear, Environmental Professional
430 N First St.
Carlton, OR 97111
Cell: (503) 680-6398
E-mail: matt.spear@eisprollc.com**



EIS
ENVIRONMENTAL INSPECTION SERVICES PRO LLC

Bus: (503) 680-6398 | Cell: (503) 944-9818

430 N First St., Carlton, OR 97111

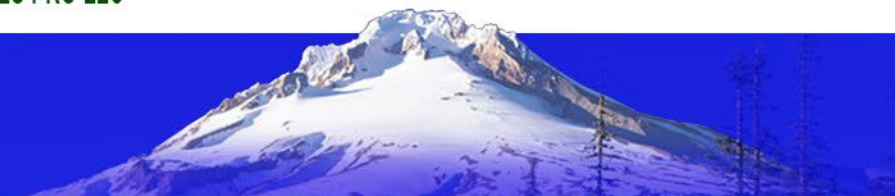


TABLE OF CONTENTS

<u>DESCRIPTION</u>	<u>PAGE NO.</u>
1.0 EXECUTIVE SUMMARY.....	1-2

APPENDIXES

LEAD ANALYTICAL TEST RESULTS.	APPENDIX 1.0
SAMPLE TABLE.....	APPENDIX 2.0
SAMPLE LOCATIONS.....	APPENDIX 3.0

1.0 EXECUTIVE SUMMARY

Lead-in-Water Retest Report

August 18th, 2023

Sampling Location(s):

Sheridan High School
433 South Bridge St.
Sheridan, OR 97378
Yamhill County

Faulconer-Chapman School
332 Southwest Cornwall St.
Sheridan, OR 97378
Yamhill County

Sheridan School District
C/O Sean Vesper, Operations & Facilities Manager

Dear Mr. Sean Vesper or to whom it may concern,

Environmental Inspection Services Pro LLC conducted a comprehensive lead-in-water retesting episode at the Sheridan School District (SSD) buildings listed above on Monday, August 21st, 2023. The drinking water samples were received by Alexin Analytical Laboratory on Monday, August 21st, 2023, and analytical test results were reported to EIS on Wednesday, August 30th, 2023. No elevated lead in drinking water considerations was noted for the various retested faucets and fountains in the subject buildings.

The EPA Maximum Contaminant Limit (MCL) for lead in public drinking water Systems is 15 parts per billion (ppb). The EPA action limit of 15 parts per billion (ppb) was utilized as the action limit for this water sampling and testing episode. The previous initial first draw drinking water sampling episode was conducted immediately following the stagnation of eight (8) hours after an active school day. This confirmation retest episode was conducted immediately following the stagnation of eight (8) hours after an active school day on the newly replaced fixtures. Plastic and sterile 250 ml. bottles were utilized for the drinking water sample collection.

Four (4) discreet water samples numbered No. 014, 062, 078 & No. 079 were collected from the contaminated points of consumption. No drinking water samples collected from the school building during this confirmation testing episode exceeded the EPA Action limit for lead in drinking water of 15 parts per billion (ppb). The lead-in-water concentration test results varied between two (2) to five (5) parts per billion (ppb).

A unique sample location code was assigned for each drinking water outlet sample. The attached alphanumeric sequence code was assigned for each sample. Example - the sampling code for sample No. 014 was as follows:
22571237 – 014BF23B - (A Water sample collected from district 2257, Building No. 1237, sample No. 014, Bathroom faucet (BF), year: 2023, retest: B.)

In the opinion of EIS, all newly replaced fixtures have resolved the previously identified lead-in-water concentrations that were initially tested over the 15-ppb action limit. Thank you for this opportunity to be of service. If there are questions concerning the lead-in-water analytical test results, contact EIS Pro LLC at (503) 680-6398.

Respectfully submitted,
Environmental Inspection Services Pro LLC
Matthew C. Spear, Environmental Professional

A handwritten signature in black ink, appearing to read 'Matthew C. Spear', is written below the typed name.

APPENDIXES

LEAD ANALYTICAL TEST RESULTS.	APPENDIX 1.0
SAMPLE TABLE.....	APPENDIX 2.0
SAMPLE LOCATIONS.....	APPENDIX 3.0

APPENDIX 1.0

LEAD ANALYTICAL TEST RESULTS



**Professional
Laboratory
Services**

13035 SW Pacific Hwy
Tigard, OR 97223
Tel.: (503) 639-9311 Fax: (503) 684-1588

ANALYSIS REPORT

Reported: 08/30/2023
Received: 08/21/2023
Sampled By: Mathew Spear
Work Order: 3233011

C Environmental Inspection Services
L Attn: Mathew Spear
I 430 N. 1st Street
E Carlton OR, 97111
N Phone: (503) 680-6398
T

Project: SSD LIW
Project # : -
Sample Type : Grab

Sampling Location: SHS
Sample Matrix: Drinking Water

Lab Number

Lab Number	Code	Method	Result	Units	MRL	EPA MCL*	Analysis Date/ Time
3233011-01	Sample Name: 22571237-014BF23B						Matrix: Drinking Water
	Sampled: 8/21/23 10:35 Sample Composition: Raw Single						
†Lead	1030	EPA 200.9	2	ppb	1	15 ppb	08/24/23 15:01

ND = None detected at the MRL **MRL** = Minimum Reporting Limit **MCL** = Maximum Contamination Limit

†All procedures for this analysis are in accordance with NELAP standards.

* The EPA MCL for Lead in Public Drinking Water Systems is 15 ppb; this is a maximum contamination level for lead in samples, this is not an acceptance level for health based exposure.

Note: Please make sure to send your results to the appropriate agency; Alexin Analytical does not forward these results to any program or person other than the above listed client. It is your responsibility to make sure these results get sent to whichever agency, city, or organization has requested them if these results are for compliance purposes.

Approved by: 
Adriana Gonzalez-Gray
Laboratory Director



Professional Laboratory Services

13035 SW Pacific Hwy
Tigard, OR 97223
Tel.: (503) 639-9311 Fax: (503) 684-1588

ANALYSIS REPORT

Reported: 08/30/2023
Received: 08/21/2023
Sampled By: Mathew Spear
Work Order: 3233012

C Environmental Inspection Services
L Attn: Mathew Spear
I 430 N. 1st Street
E Carlton OR, 97111
N Phone: (503) 680-6398
T

Project: SSD LIW
Project #: -
Sample Type: Grab

Sampling Location: FCES

Lab Number

Table with 8 columns: Lab Number, Code, Method, Result, Units, MRL, EPA MCL*, Analysis Date/ Time. Contains three rows of data for samples 3233012-01, 3233012-02, and 3233012-03.

ND = None detected at the MRL MRL = Minimum Reporting Limit MCL = Maximum Contamination Limit

†All procedures for this analysis are in accordance with NELAP standards.

* The EPA MCL for Lead in Public Drinking Water Systems is 15 ppb; this is a maximum contamination level for lead in samples, this is not an acceptance level for health based exposure.

Note: Please make sure to send your results to the appropriate agency; Alexin Analytical does not forward these results to any program or person other than the above listed client. It is your responsibility to make sure these results get sent to whichever agency, city, or organization has requested them if these results are for compliance purposes.

Approved by:

Signature of Adriana Gonzalez-Gray
Adriana Gonzalez-Gray
Laboratory Director

APPENDIX 2.0

SAMPLE TABLE

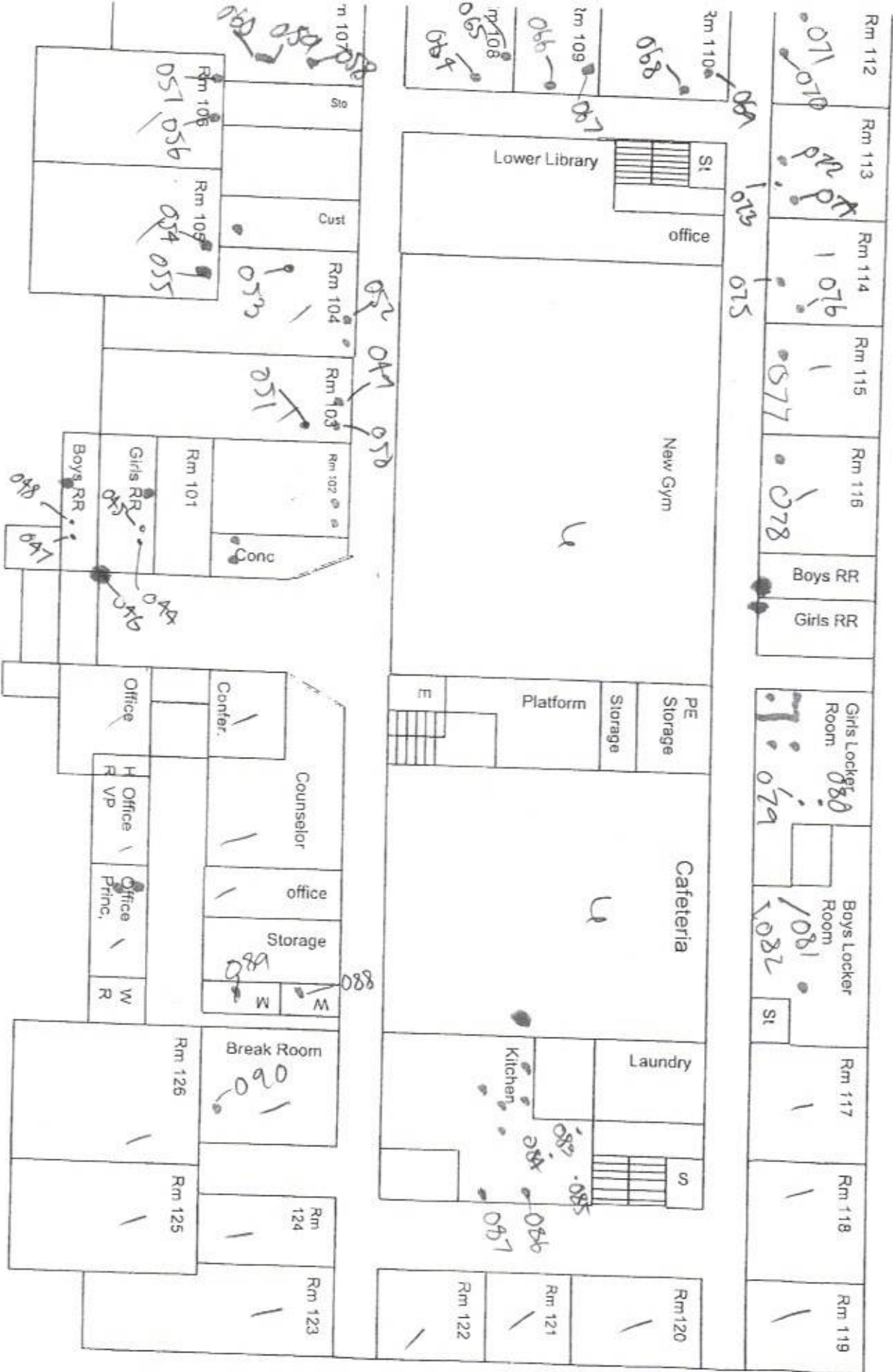
APPENDIX 3.0

SAMPLE LOCATIONS

High

Fire Exit Routes	Exit 2 Exit 3 Exit 1 Exit 4 Exit 5 Exit 7 Exit 1 Exit 1-5-6
Rooms 2-3-4 Rooms 5-6-7-8 Rooms 11 Room 12-13-14 Room 18 & Shop Room 19 Library Old Gym	
Concessions	Exit 8
Locker Rooms	Exit 12
Offices	Exit 12
Gym	Exit 8-9-12
Exercise Room	Exit 10
Weight Room	Exit 11
Gas and Electrical Shut Off	
A- Natural Gas Shut Off	
B- Water Shut Off	
C- Electrical Power Shut Off	
D- Gas Shut Off Key	
Exit 1-2-5-6-7-8-9-12 OK Exit 3-4-10-11 Power lines Rooms 9-10 Both need to proceed with	





42 PCS

FCS

Q

FAULCONER/CHAPMAN OLD GYM

